



PROVINCIA DI TORINO
www.provincia.torino.gov.it



FPMCI
Fondo Provinciale Milanese per
la Cooperazione Internazionale
www.cooperazionemilanese.org



PDA
Planning and Local Development Agency
Municipalities Union of Hermel - Lebanon
www.hermeldevelopment.org



PROJECT FUNDED BY EUROPEAN UNION
Partnership for urban renewal project towards regional
economic development - P.P.R.U.
ENPI-2009/203-617



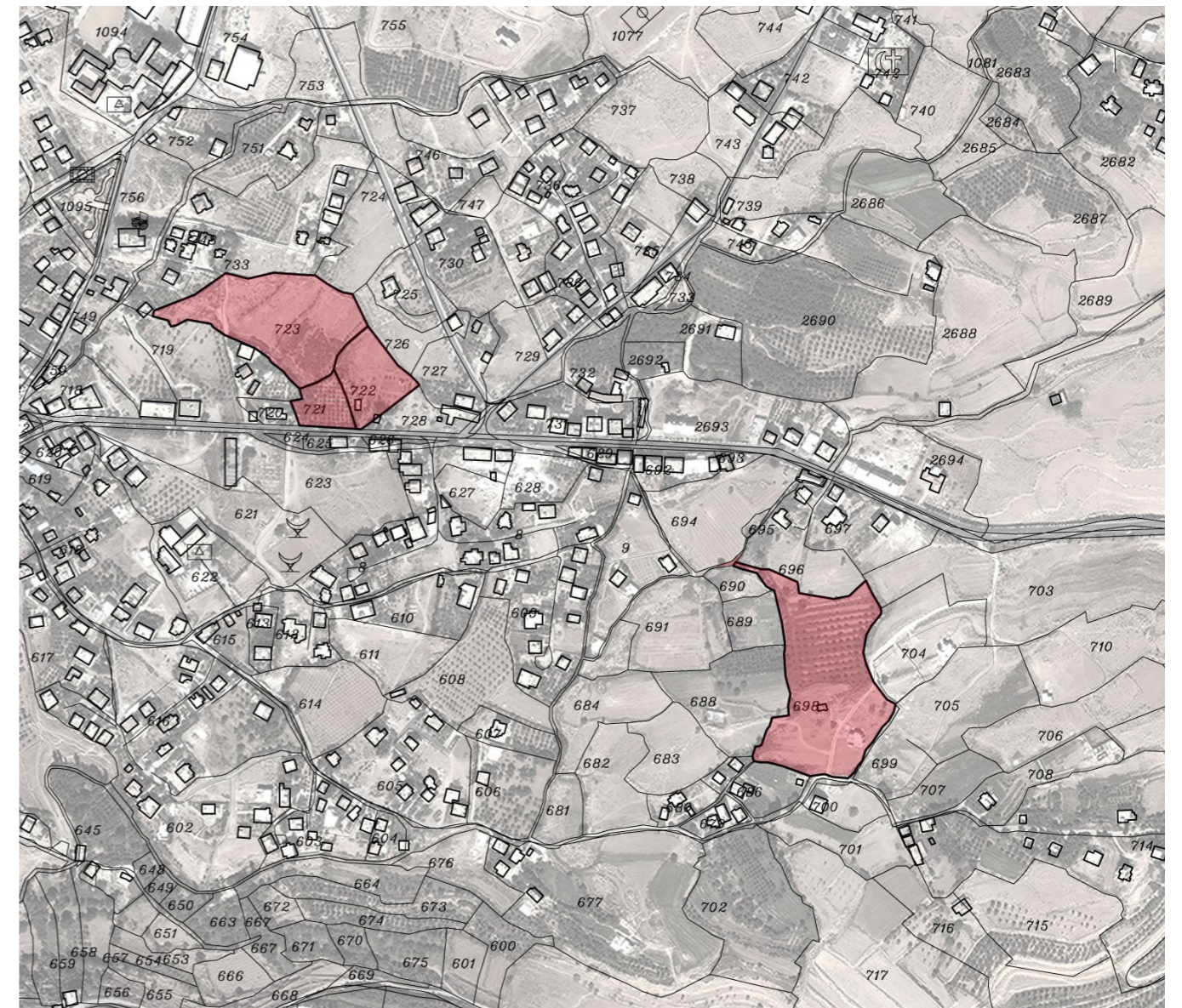
**DEVELOPMENT PROGRAM FOR THE ORGANISATION
OF THE INDUSTRIAL AND HANDICRAFT SECTOR IN HERMEL**

Object
**HANDCRAFT AREA
AND LOCAL MARKET**
DRAFT PROJECT

december 2013

Architectural Design
ARCò - Architettura e Cooperazione
Società Cooperativa
Via Friuli, 26/A
20135 - Milano, Italy





The city of Hermel is the capital of the Hermel region, and lies in the north of Lebanon. The region is mostly mountainous, the city has a population of 80,000 people and has an immigration of 50%. The development plan has identified two main problems for Hermel: 1 there is no area for small industries and crafts; 2 there is no market or a close wholesale center.

The purchase of fruits and vegetables are from several sources, but the closest to the region is about one hour and a half. There are several industries and crafts in the area but a field survey shows that the total shops rented by the industrialists of 150 out of 200 shops rent ranges between \$ 100 and \$ 300 at an average \$ 200 a month, "while the number of shops owned by industrialists reach only 50 shops.

HANDCRAFT AREA

The project starts from the idea of a modular solution, able to adapt itself to more functional needs. This approach is followed by sustainable principles based on three main focuses:

- cheap, modular and standard structure
- flexible interior spaces
- insulation, cross ventilation and energy self sufficiency

So one structure can generate many different buildings, that every user can personalize. The aggregation of the modules proposes a general masterplan with private, collective and public spaces, with services for the workers and parking places for customers.

HANDCRAFT AREA

MAIN POINTS

- Centralisation of the diverse industries and crafts of the area of Hermel in a unique place
- A better distribution of the shops creating a clearer visibility
- Premises offering better working conditions
- Flexibility of premises, adaptable for the diverse types of works

PROGRAM

200 premises of 50m2 and 35 m2

- Tilers factory
- Rottamazione auto
- Concessionary auto
- Turners Factory
- Graphic advertising studio
- Workmanship of the glass
- Matress factory
- Furniture factory
- Varnisher factory
- Accessories auto shop
- Varnisher auto shop
- Elettrauto
- Welders factory
- Auto bodyworker
- Automobile retailer
- Electrical shop
- Automobile mechanics shop
- Aluminium factory
- Forges factory
- Joineries factory
- Machanical shop for bicycles and auto

SHOWROOMS & SHOPS

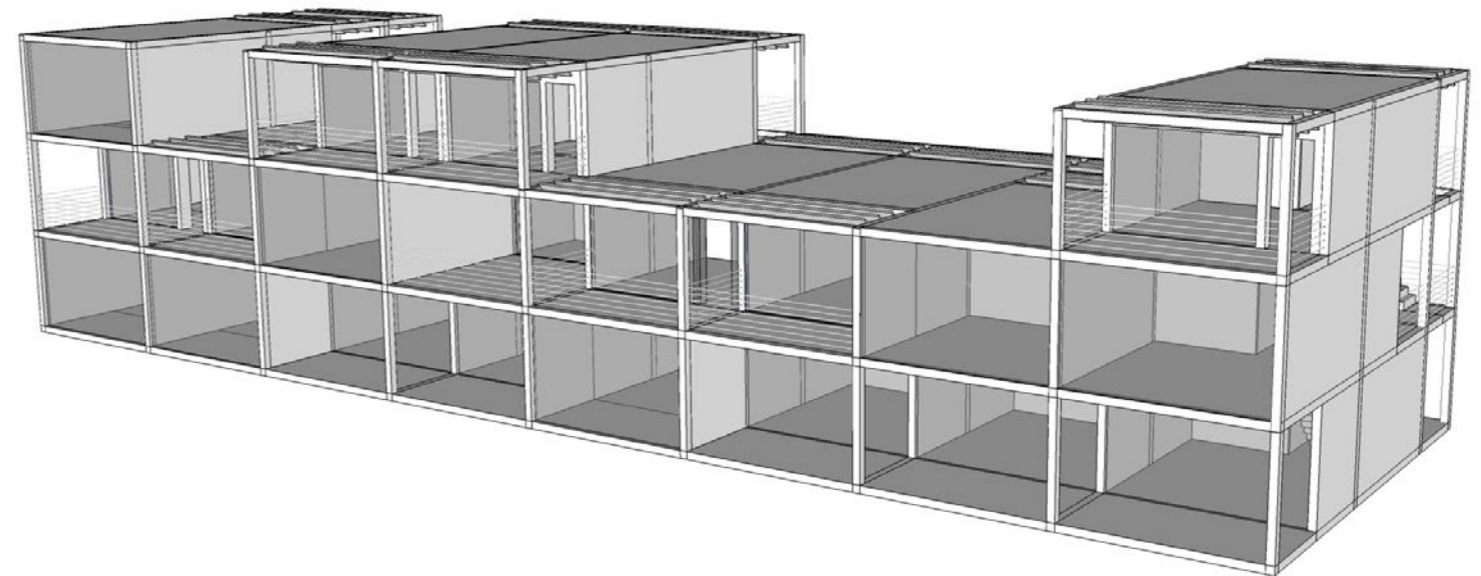
- Concessionary auto
- Graphic advertising studios
- Accessories auto shop
- Automobile retailer
- electrical shop

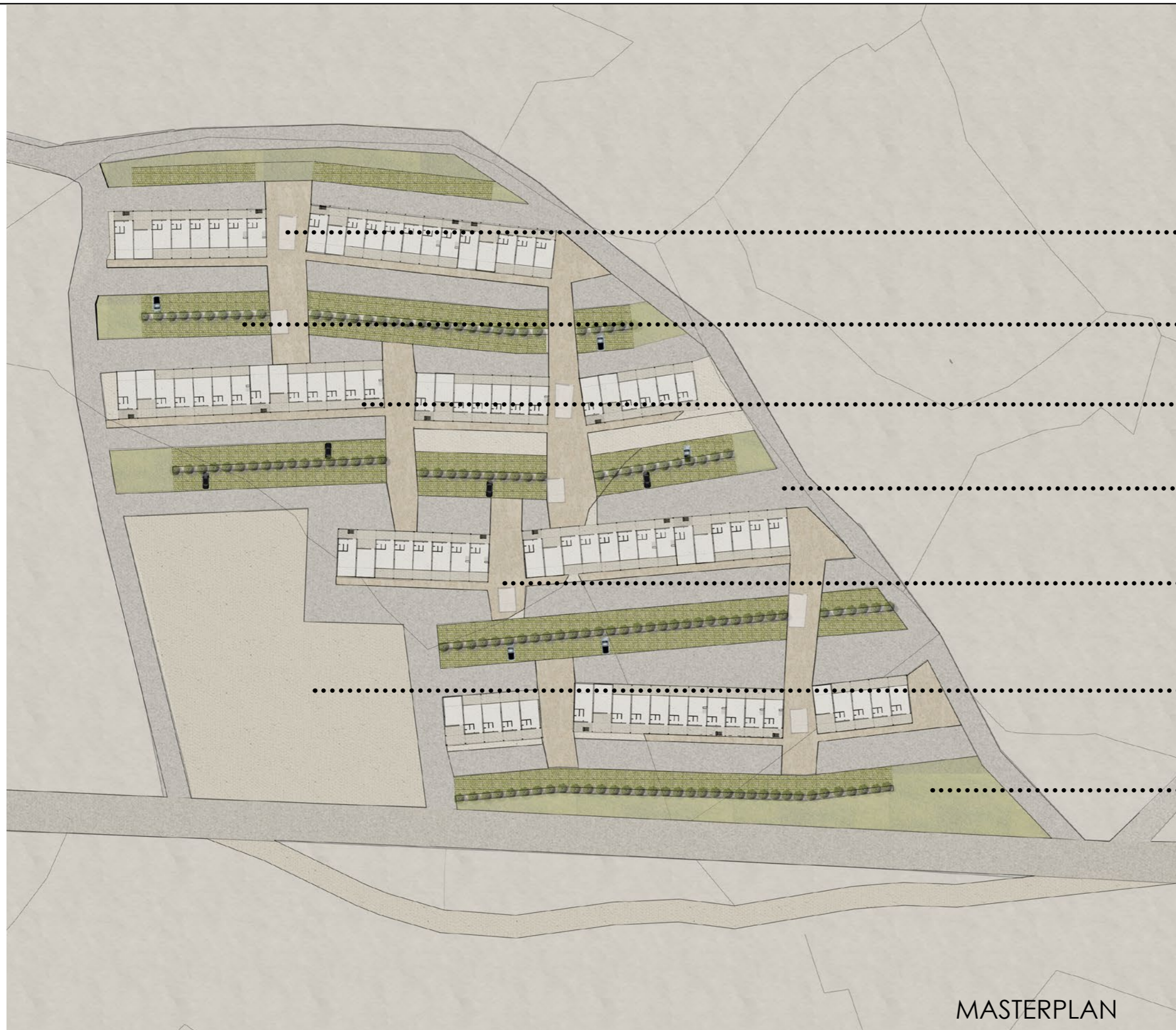
FACTORIES

- Turners Factory
- Aluminium factory
- Forges factory

FACTORIES & SHOWROOMS

- Tilers factory
- Rottamazione auto
- Furniture factory
- Matress factory
- workmanship of the glass
- Varnisher auto shop
- Automobile bodyworker
- Automobile mechanics shop
- Machanical shop for bicycles and auto





PUBLIC SERVICES

PARKING AREAS

HANDCRAFT MODULES

CAR ROADS

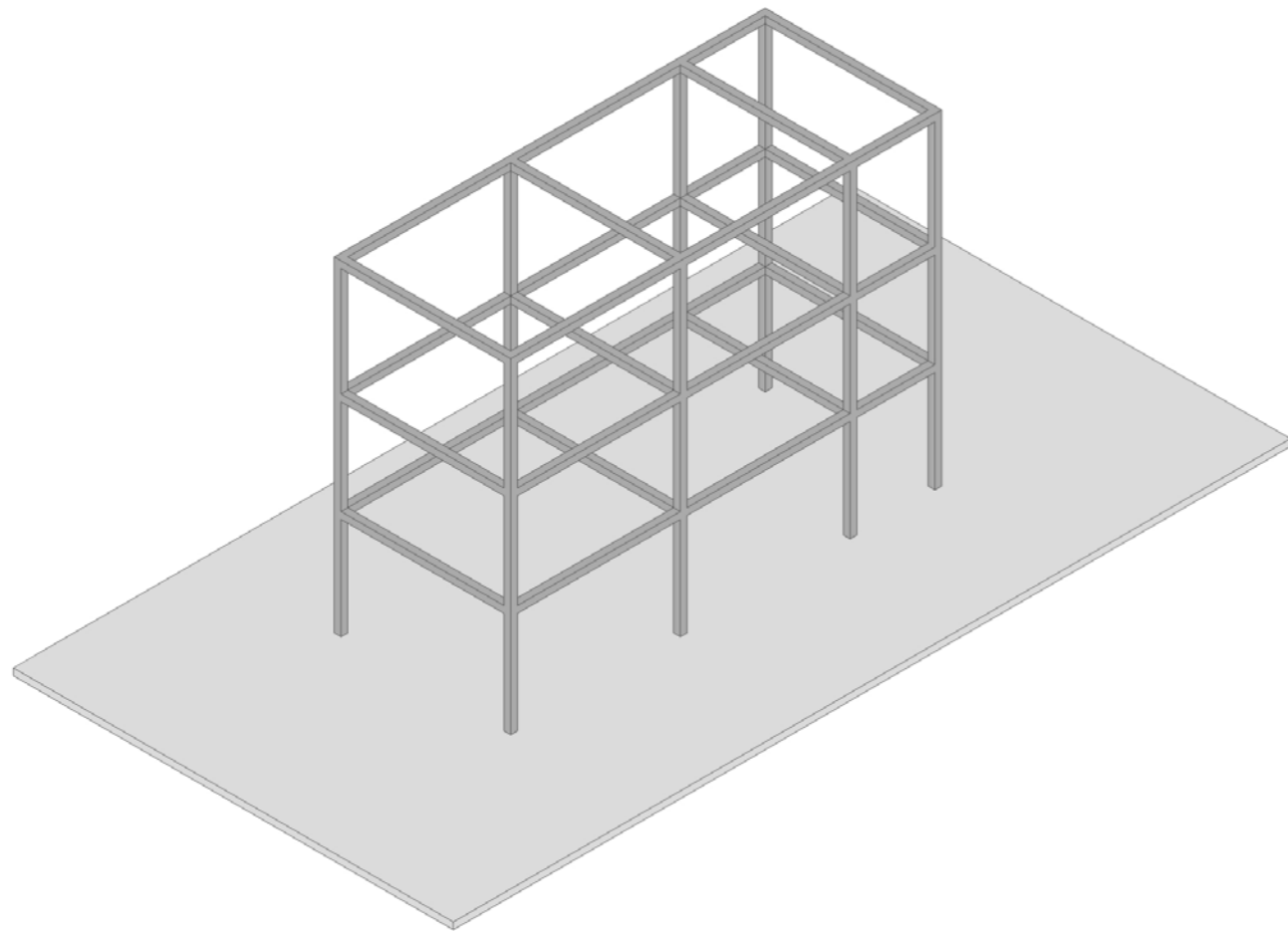
PEDESTRIAN PATHS

EXPANSION AREA

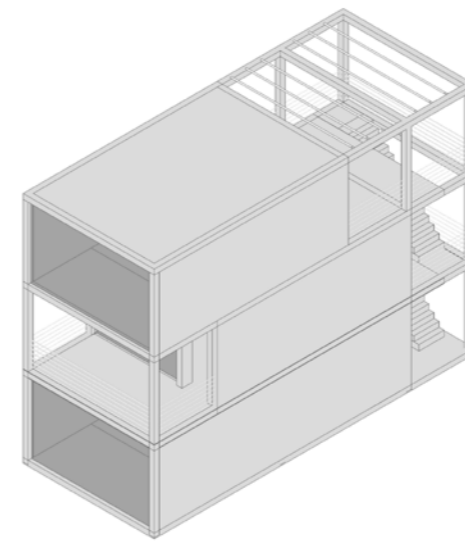
PUBLIC GARDENS

MASTERPLAN

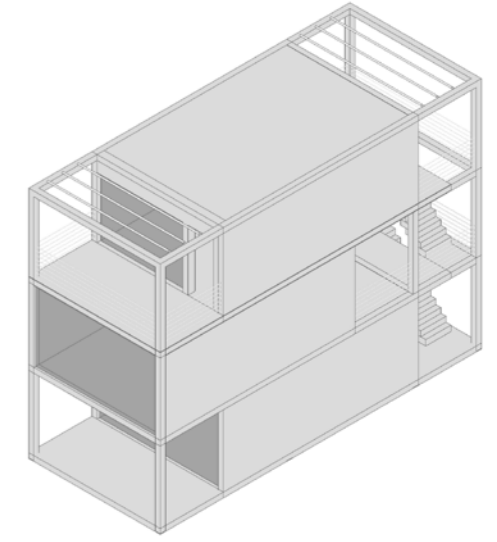
THREE FLOOR MODULE



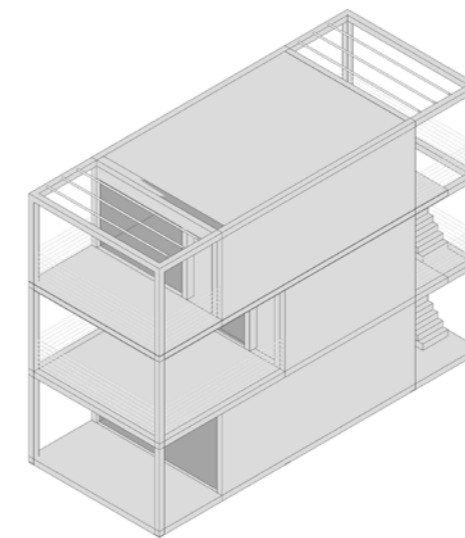
IRON STRUCTURE 5x5 m
5x2,5 m



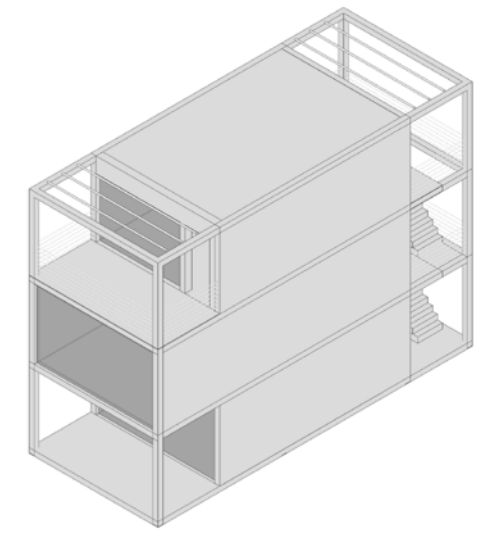
A



B

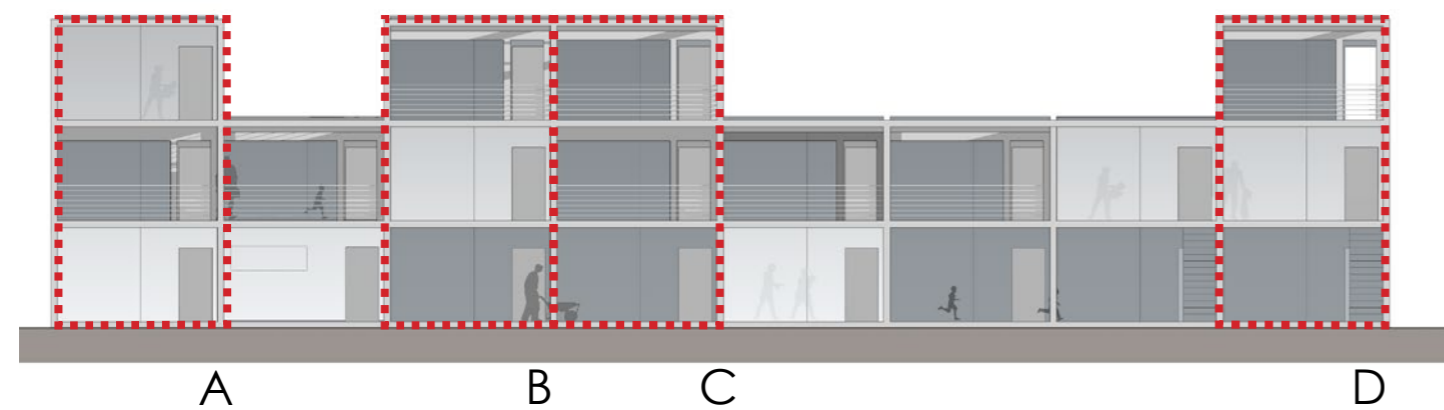


C



D

AGGREGATION CONCEPT

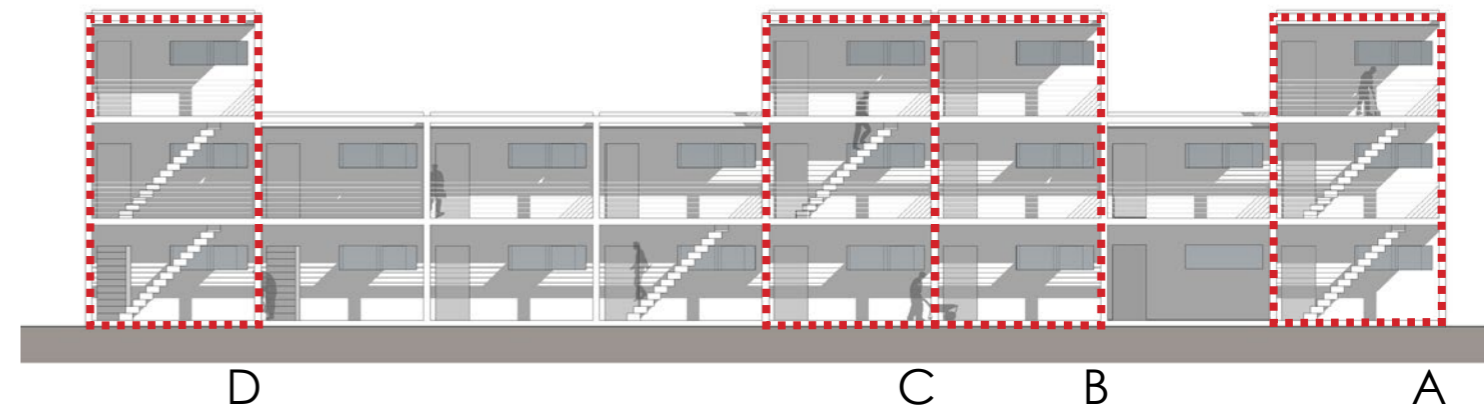


A

B

C

D

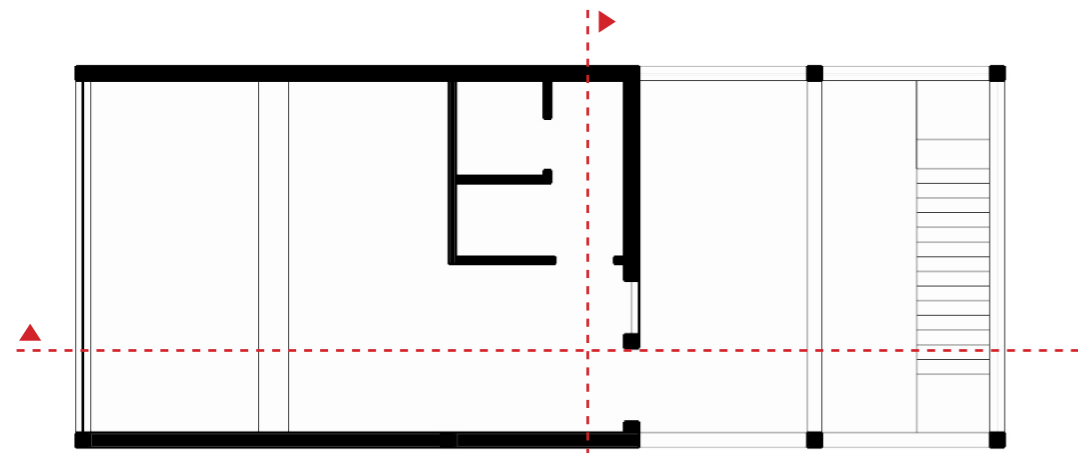


D

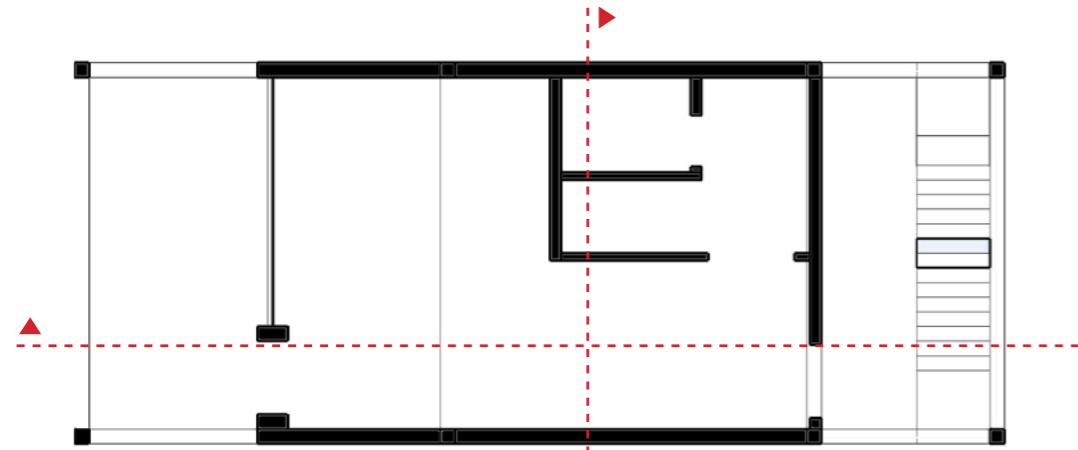
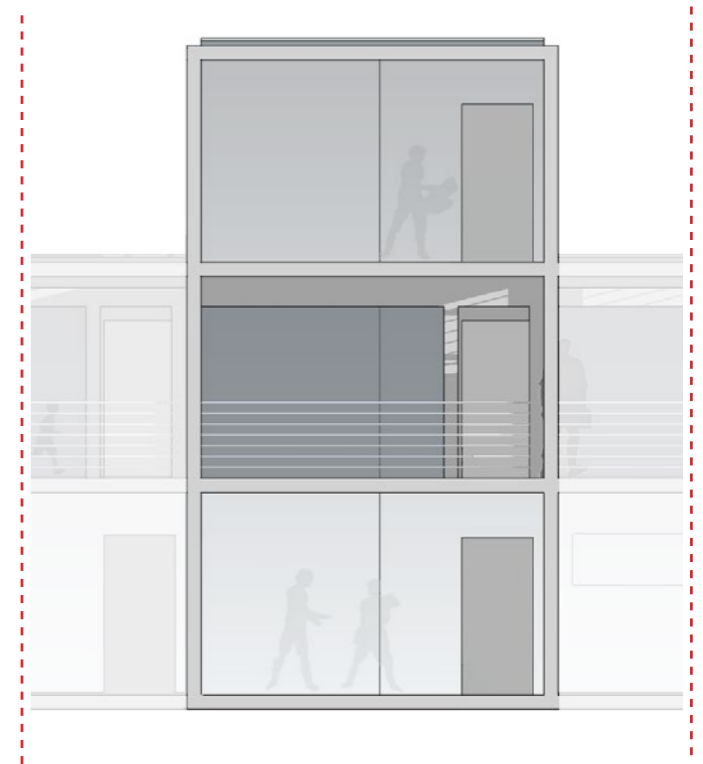
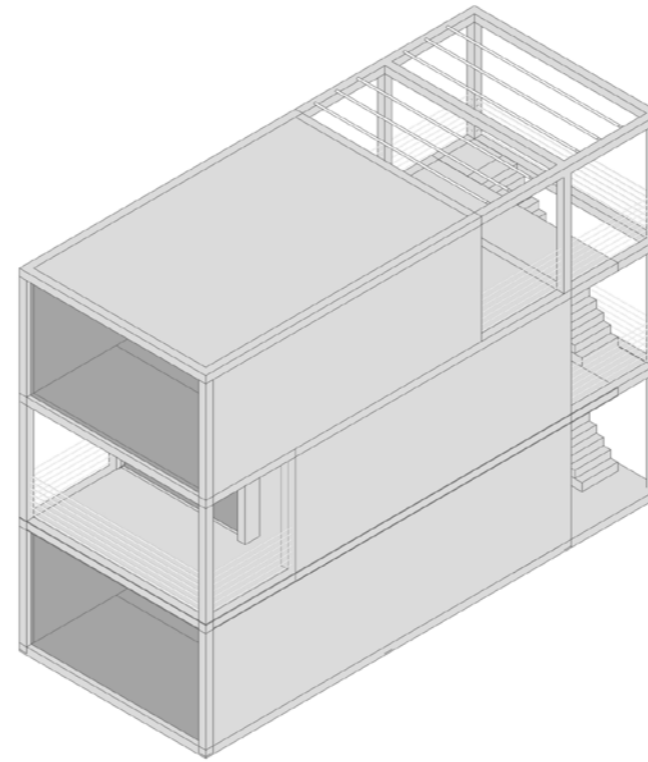
C

B

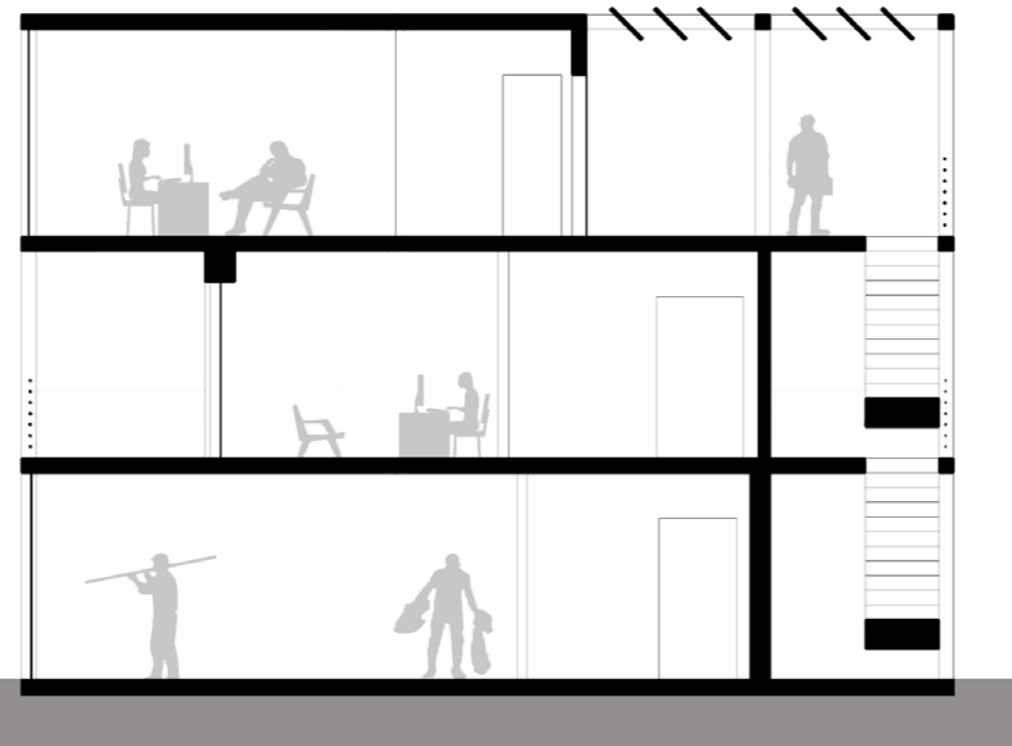
A



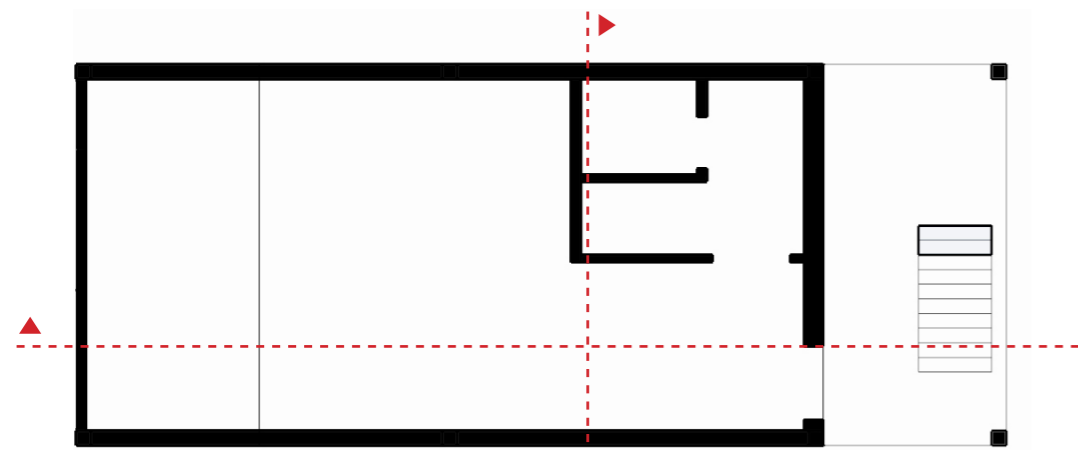
SECOND FLOOR



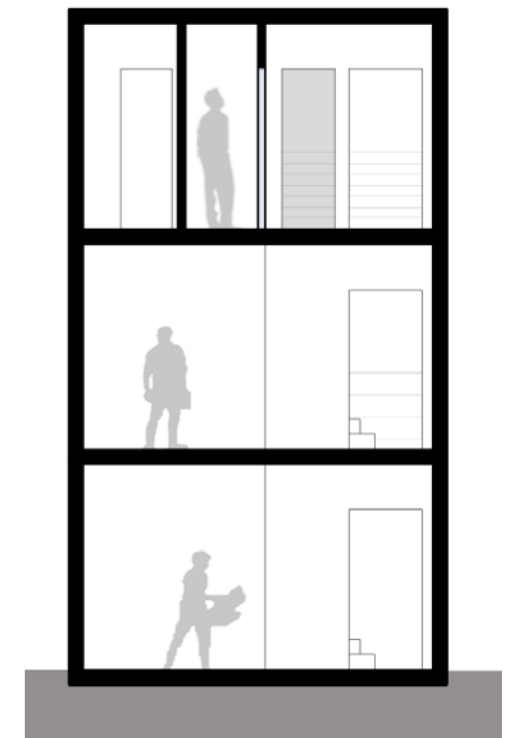
FIRST FLOOR



LONGITUDINAL SECTION

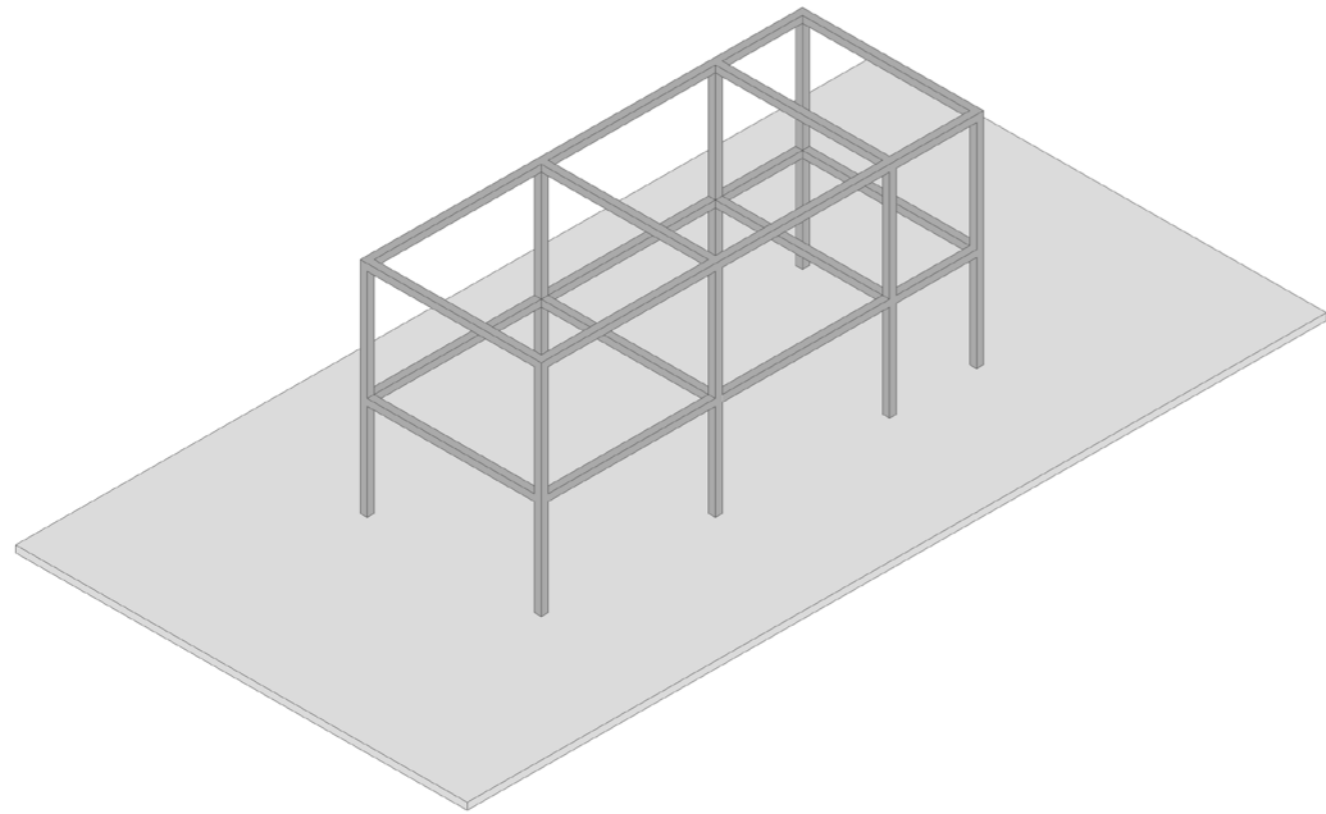


GROUND FLOOR

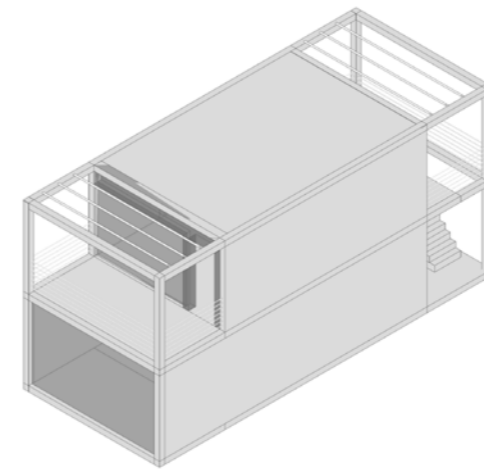


CROSS SECTION

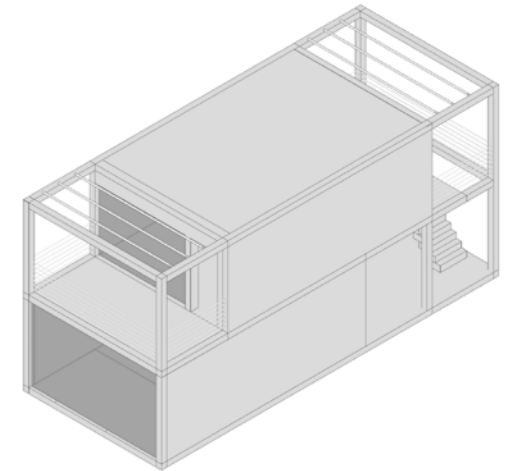
TWO FLOOR MODULE



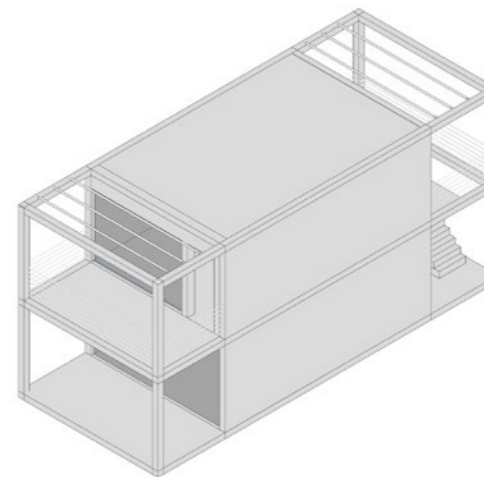
IRON STRUCTURE 5x5 m
5x2,5 m



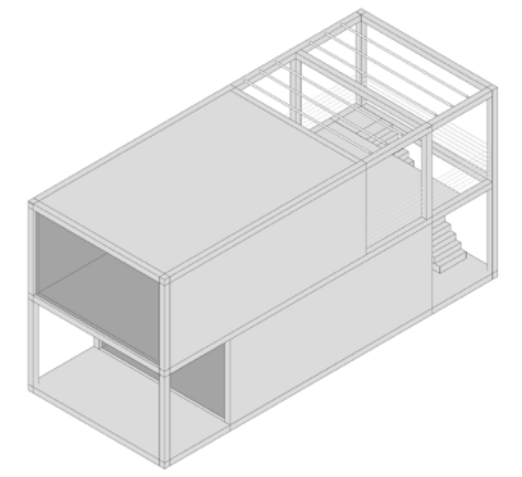
A



B

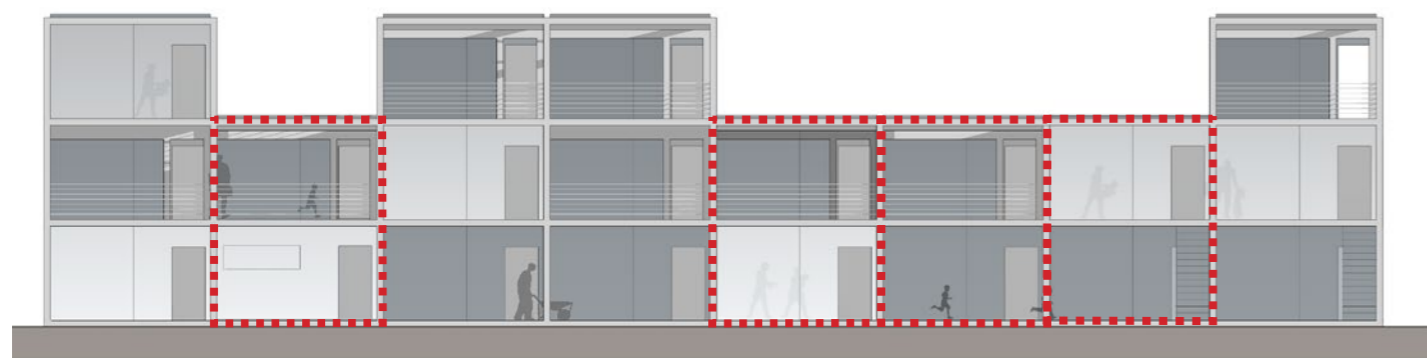


C



D

AGGREGATION CONCEPT

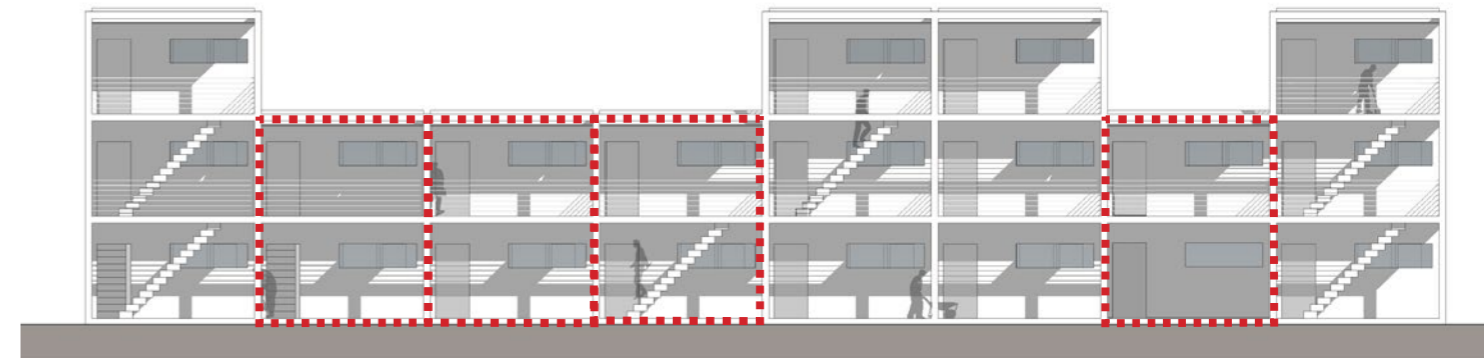


A

B

C

D

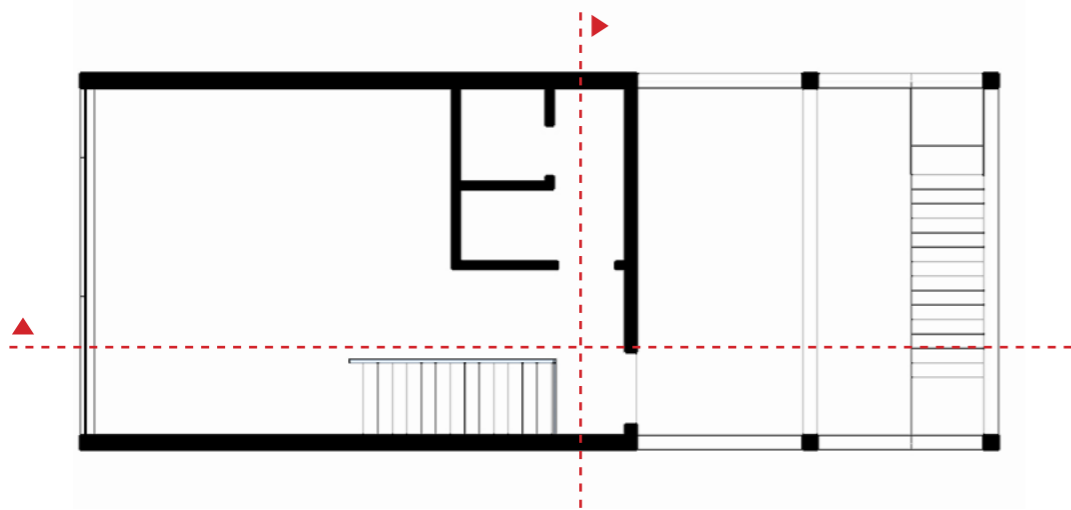


D

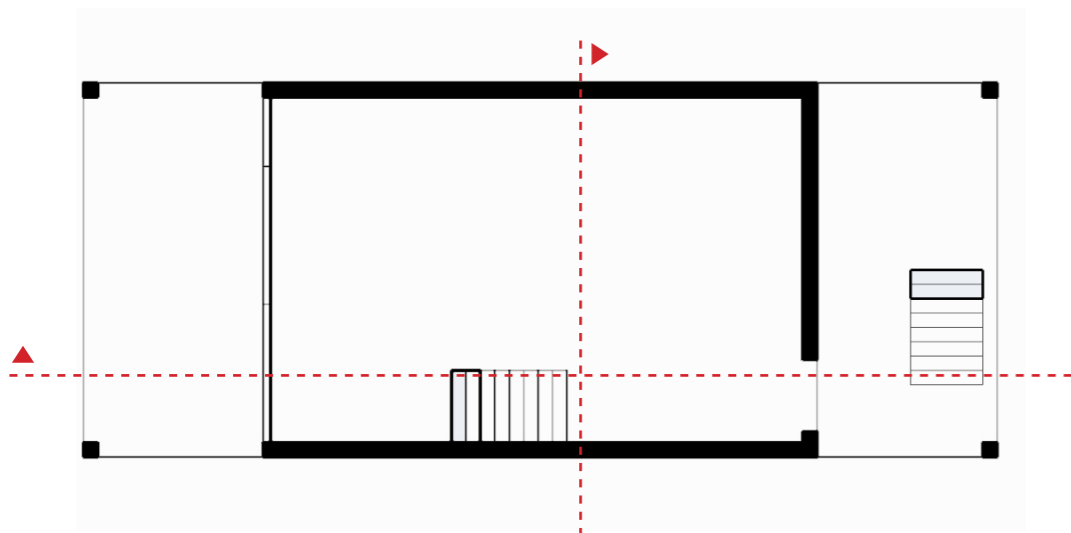
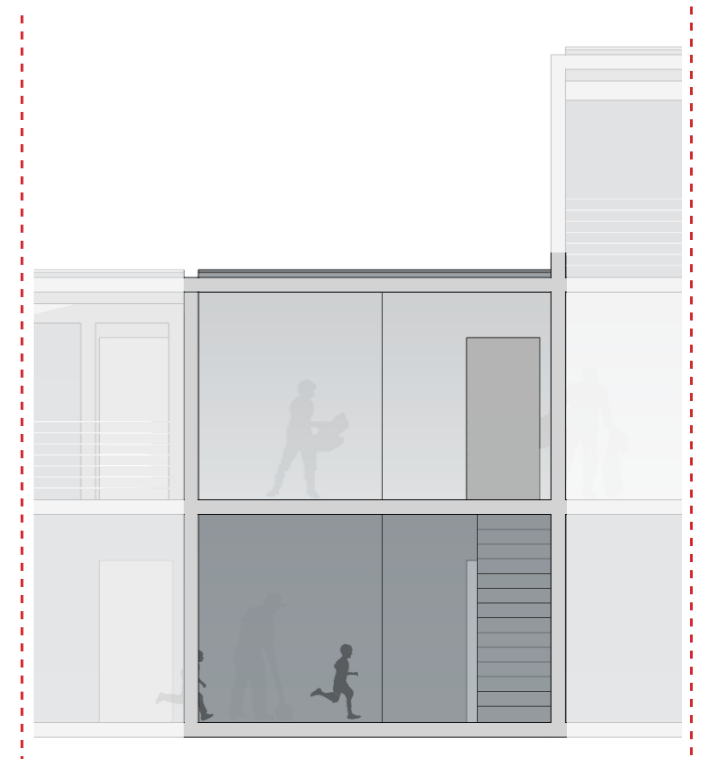
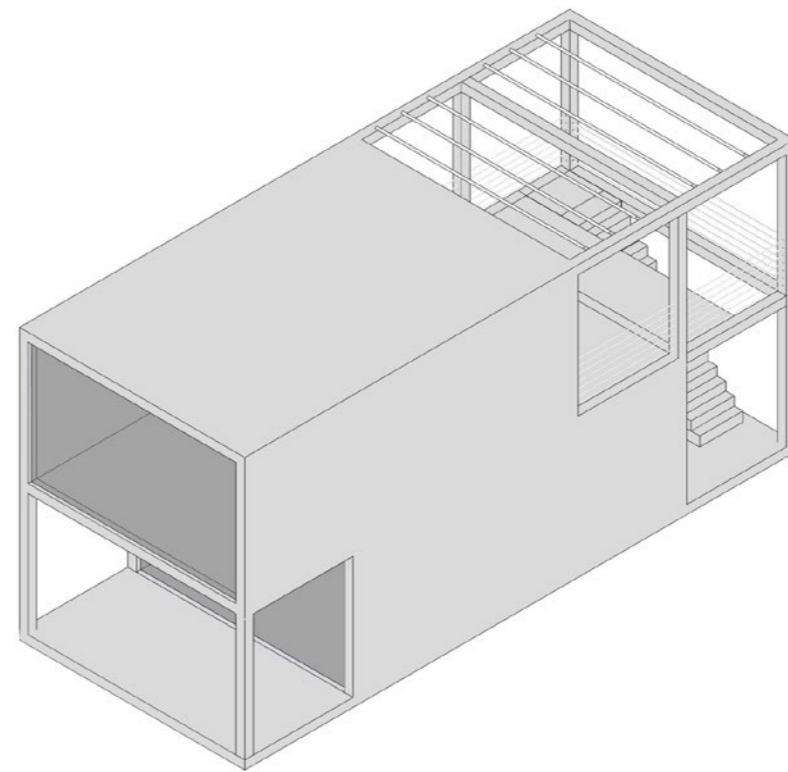
C

B

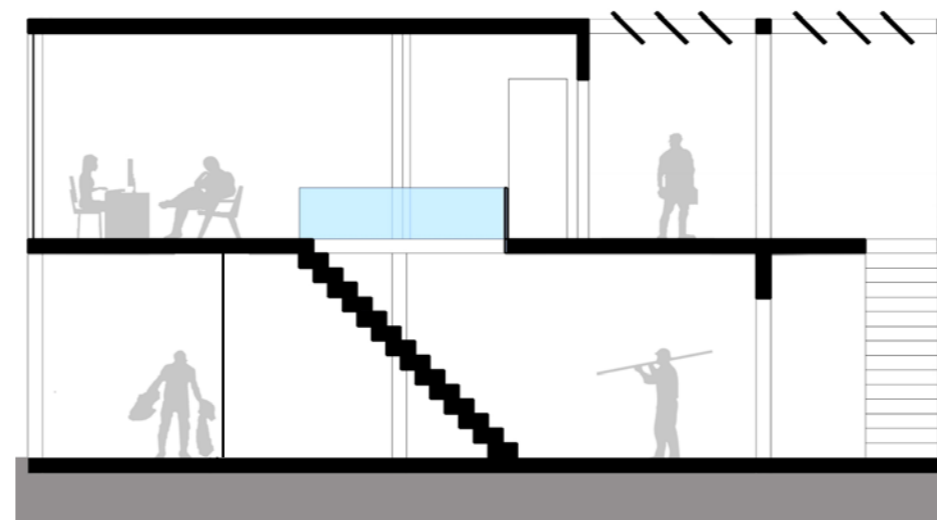
A



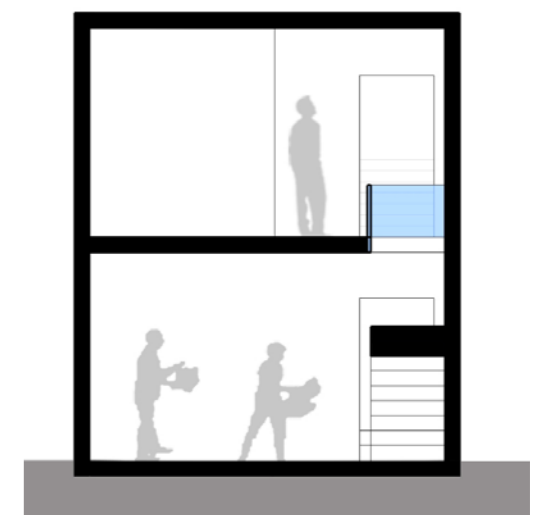
FIRST FLOOR



GROUND FLOOR



LONGITUDINAL SECTION



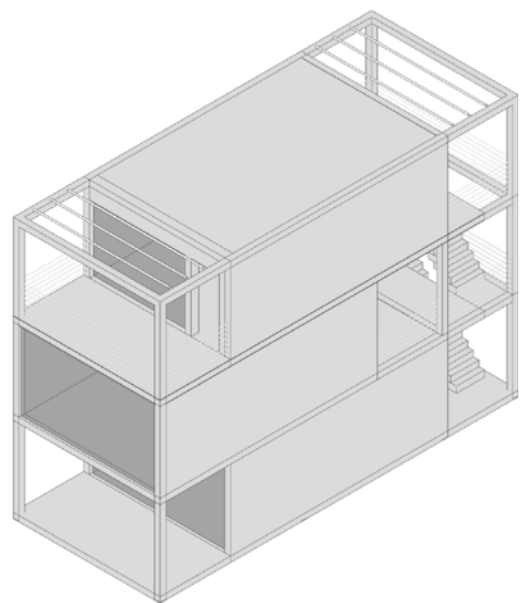
CROSS SECTION

SHOWROOM & FACTORIES

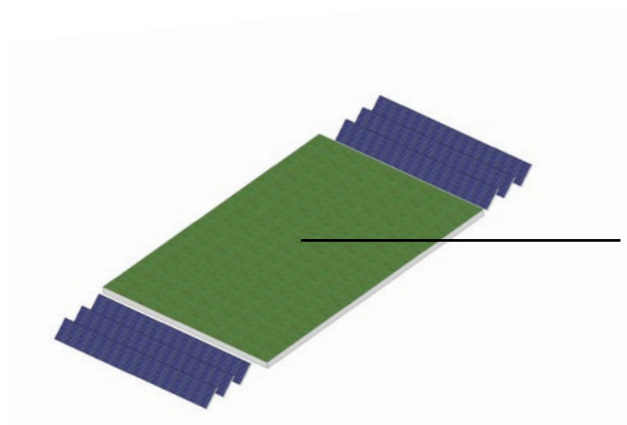
- Tilers factory
- Car Scrappage
- Furniture factory
- Matress factory
- workmanship of the glass
- Varnisher auto shop
- Automobile bodyworker
- Automobile mecanics shop
- Machanical shop for bicycles and auto

FACTORIES

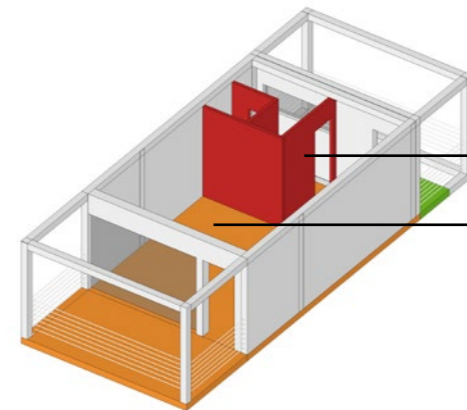
- Turners Factory
- Aluminium factory
- Forges factory
- Joineries factory
- Varnisher factory
- Welders factory



FUNCTIONAL LAYOUT



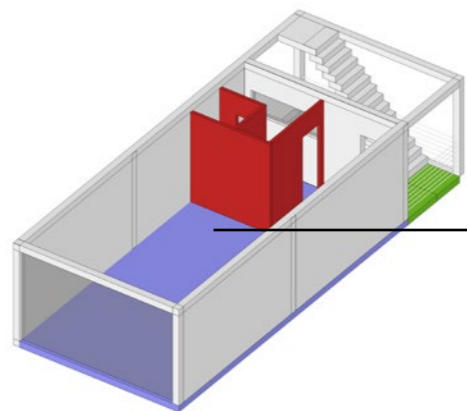
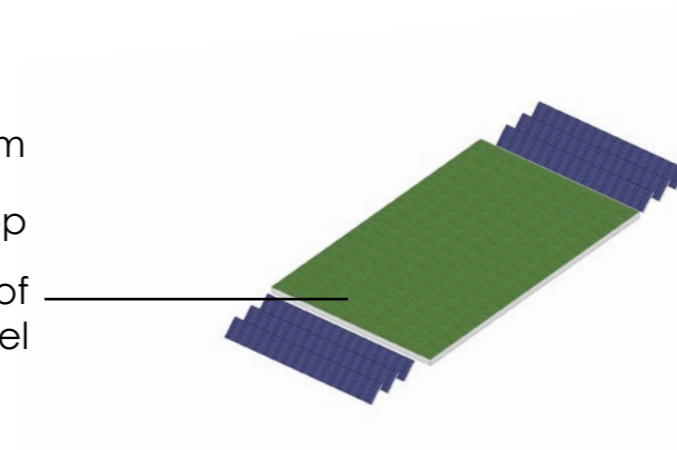
green roof and pv panel



bathroom

shop

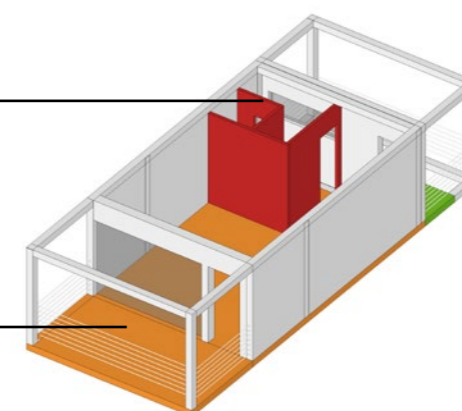
green roof and pv panel



bathroom

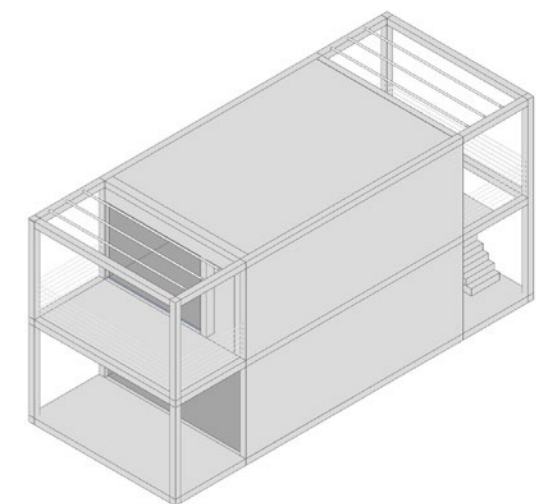
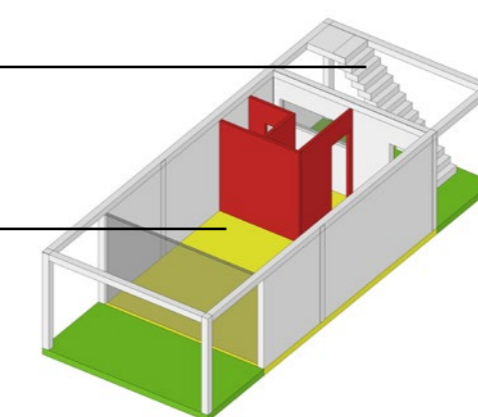
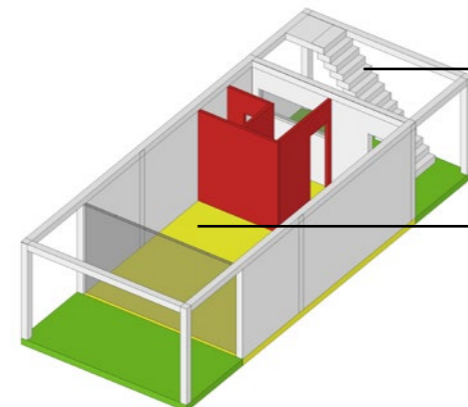
office

shop



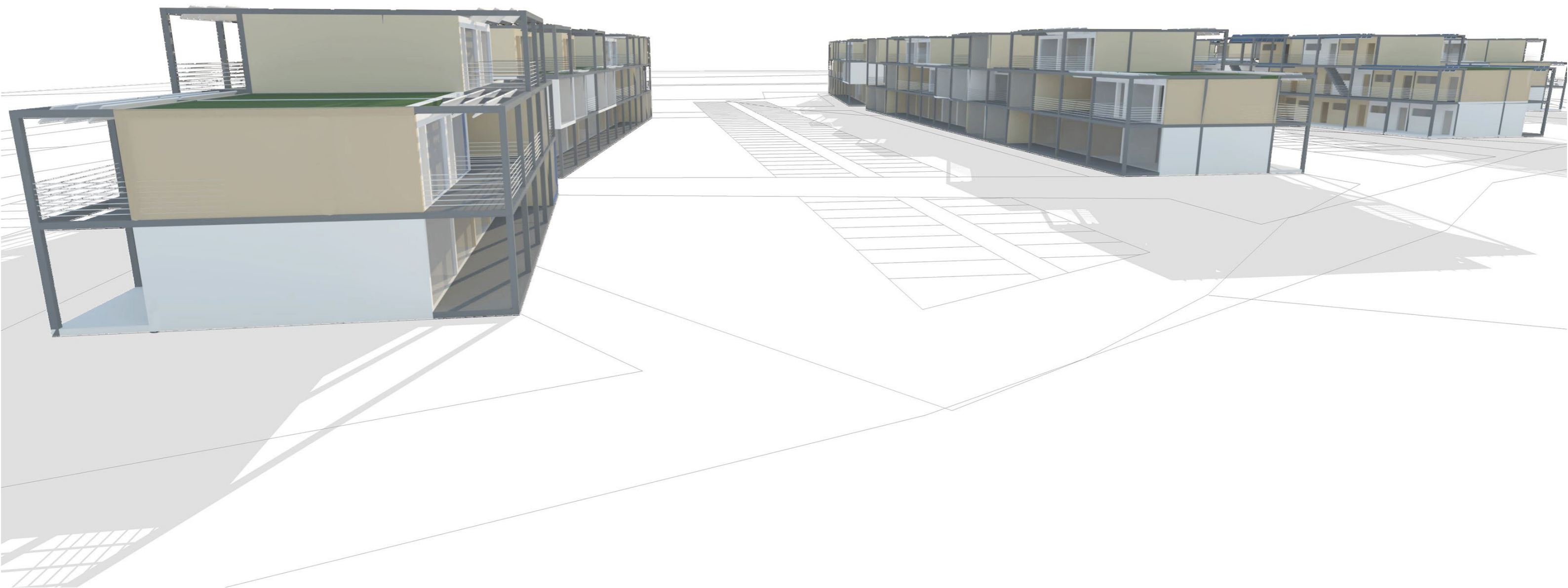
staircases

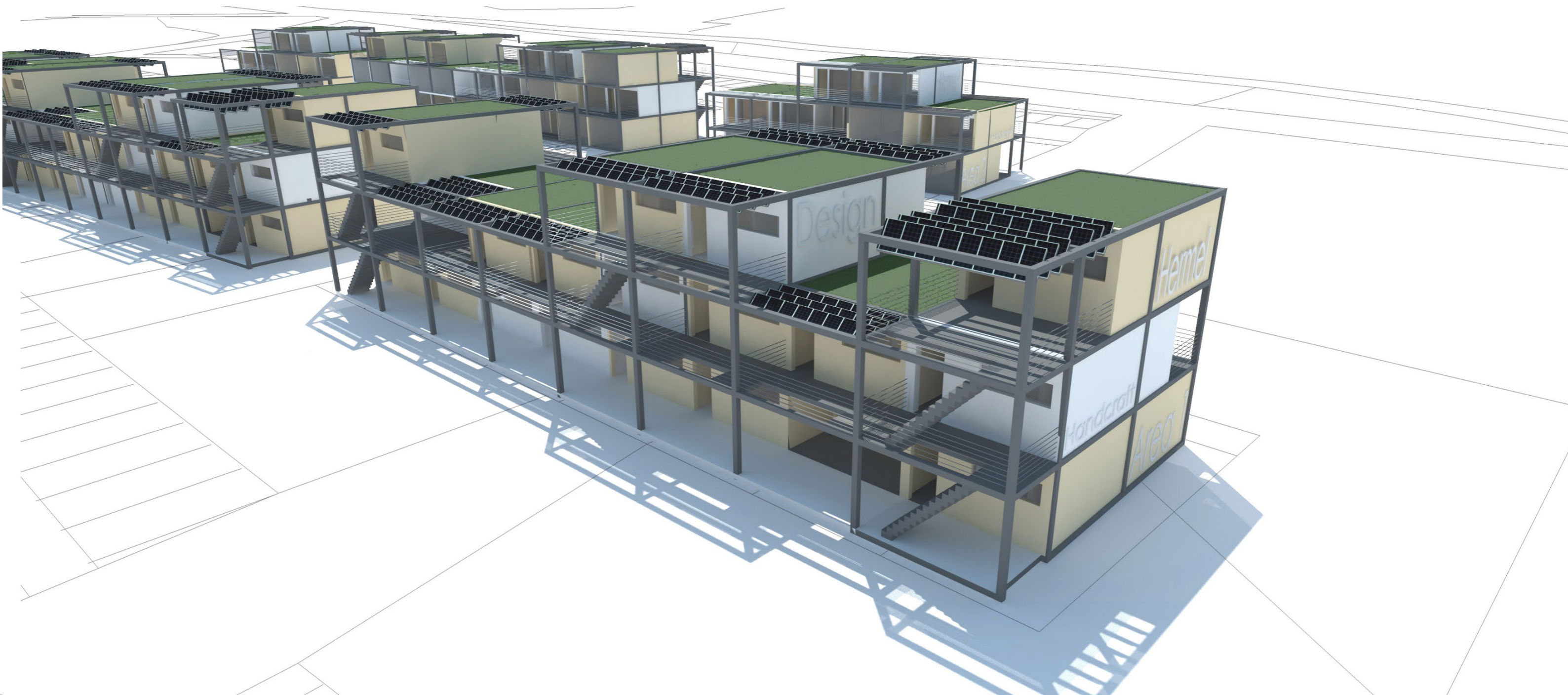
workshop

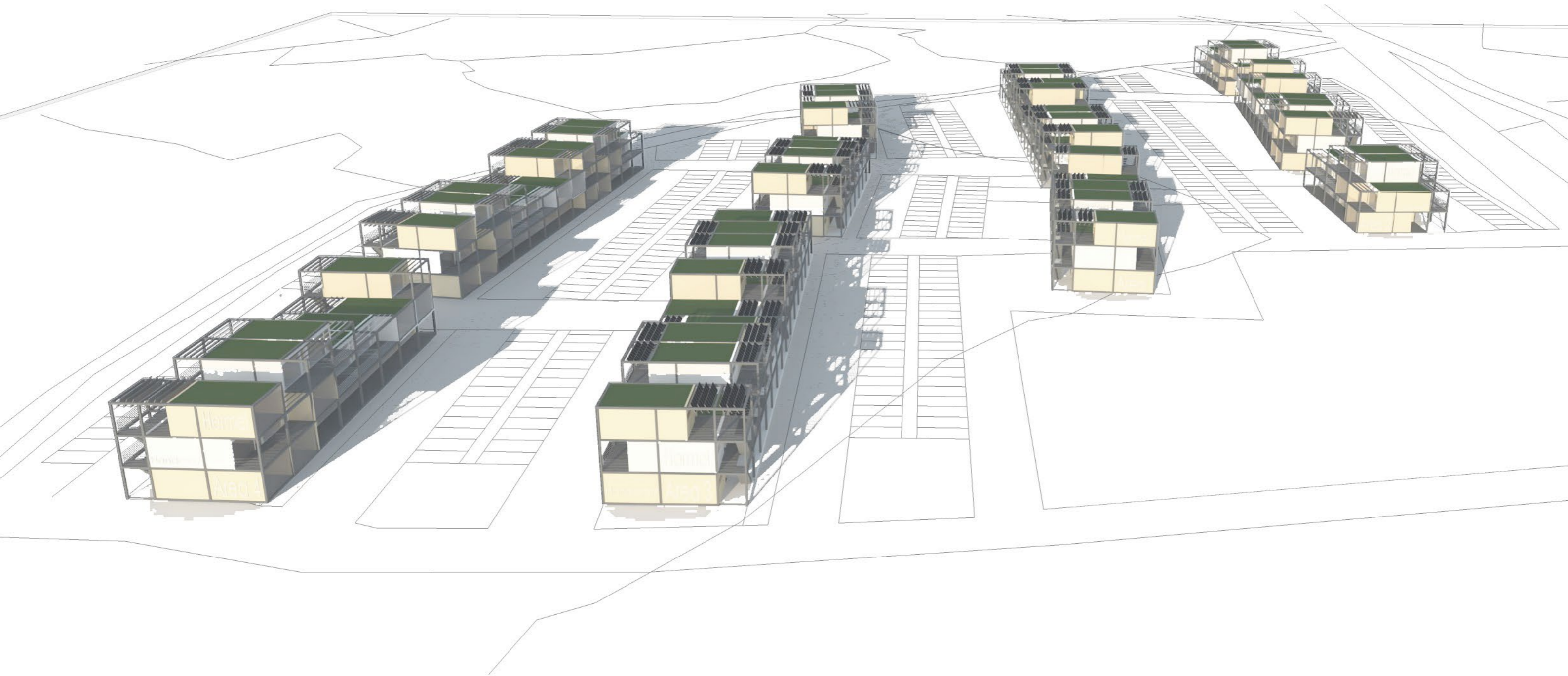


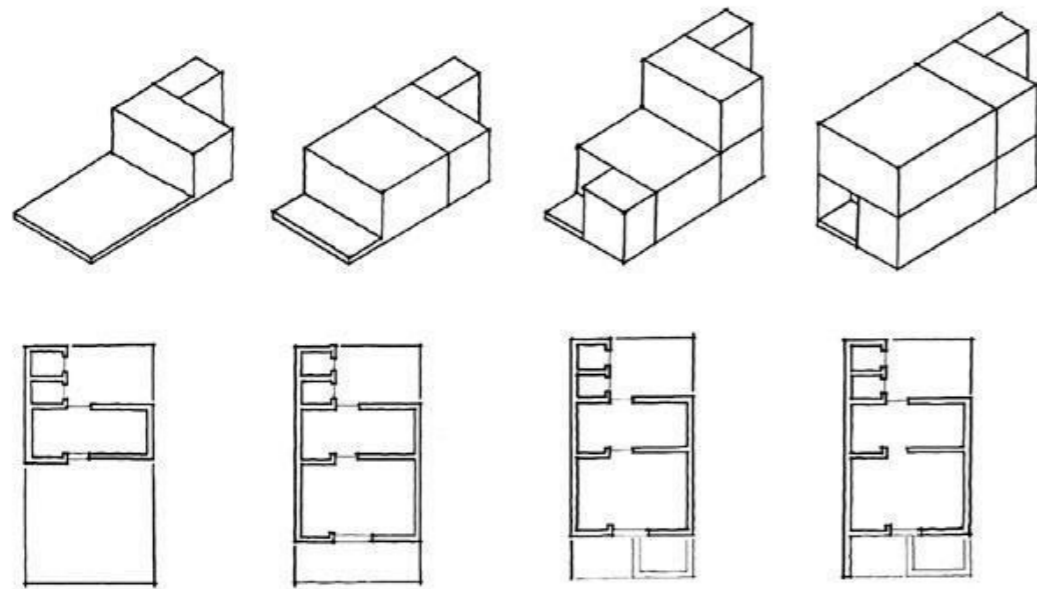
SHOWROOM & SHOPS

- Concessionary auto
- Graphic advertising studios
- Accessories auto shop
- Automobile retailer electrical shop









ARANYA COMMUNITY HOUSING
Balkrishna Vithaldas Doshi
1986 - Indore, India



ELEMENTAL
Alejandro Aravena
2004 - Iquique, Chile



LIBRARY PARK SANTODOMINGO

Daniel Bermudez Samper
2010 - Bogotá, Colombia

Object

**HANDCRAFT AREA
AND LOCAL MARKET**
DRAFT PROJECT

december 2013

Architectural Design

ARCò - Architettura e Cooperazione

Società Cooperativa

Via Friuli, 26/A

20135 - Milano, Italy

info@ar-co.org

www.ar-co.org



Collaborators

Maura Carassai

Dounia Fert

Lucrezia Morandi

Lisa Sghirlanzoni